



## Apple iPod Mini Take Apart Repair Manual

Copyright © 2006 Powerbookmedic.com. All rights reserved.

Any portion of this manual may not be copied, reproduced, or distributed without the express written consent of Powerbookmedic.com. Violators will be prosecuted.

This manual is presented as a guide in order to help you repair problems on your iPod. Working on an iPod can be dangerous if not done properly. We at Powerbookmedic.com take no responsibility for any damage or harm done to yourself or your iPod as a result of reading this guide.

Suggestions for making this manual better? Email: [sales@powerbookmedic.com](mailto:sales@powerbookmedic.com)

### **Tools Needed for Take Apart:**

Philips head screwdriver (size #00, available from PowerbookMedic.com)  
Flat pry tool (such as a black nylon tool available from our store)

# Table of Contents

Removing the Shell / Plastic Covers.....	pg. 3
Battery Removal.....	pg. 7
Hard Drive Removal.....	pg. 8
Headphone Jack Board Removal .....	pg. 9
LCD Screen Removal.....	pg 10
ClickWheel Removal.....	pg. 12

## Removing the Shell / Plastic Covers

Begin by removing any cable that may be attached to the iPod mini including headphones or docking cables. At the top and bottom of the iPod Mini are white oval plastic inserts. Using a flat head tool gently pry the insert out. It is held on by a very light adhesive and 3 clips. It should come off easily. Do not use too much force in prying or you may damage your casing. It is also recommended to use a plastic or nylon tool (available from our store) so you do not scratch the casing.



The plastic insert should come up and out as shown in the picture below.



Removing the plastic insert will reveal two small size #00 philips head screws. Remove both screws.



Repeat the procedure you used to remove the top insert to remove the bottom insert. It should come off easily as it is not held on by an adhesive.



There is an orange cable that goes from the clickwheel to the logic board. Gently pry this connector up by placing a flat tool on the underside of the cable and pulling up. Be extremely careful so as not to damage this cable.



Place your flat tool in such a position that you can use it as leverage to pull with, from the top gently pull towards you until the whole assembly slides out of its shell. It should slide out easily.



Continue to pull the unit out of the shell as shown in the picture below.



## Battery Removal

Before proceeding, you must follow the previous instructions to remove the iPod Mini from the shell.

The battery is connected to the logic board by two cables that lead into a connector. This connector plugs into another connector on the logic board. (Think of it as an electrical plug) If you grasp the cable and gently pull up, the two connectors will separate and the battery will come free. To install a new battery, simply attach the two connectors and reassemble the iPod.



## Hard Drive Removal

It is recommend you first remove the battery and then continue to this step.

Under the battery, you will notice an orange cable connected to the logic board as shown in the picture below. To undo this connector from the logic board, gently pry up with either your finger or a flat tool. It should come up easily, and the hard drive will be free of the logic board. To reinstall, simply line up the hard drive connector with the logic board and push down firmly. You should “feel” the cable going into place, almost like a snap.





## Headphone Jack Board Removal

To remove the headphone jack board, simply grasp it as shown in the picture below and gently pull up. This will undo the board from its logic board connector. When reassembling, make sure the board is lined up with its connector, and firmly press down.



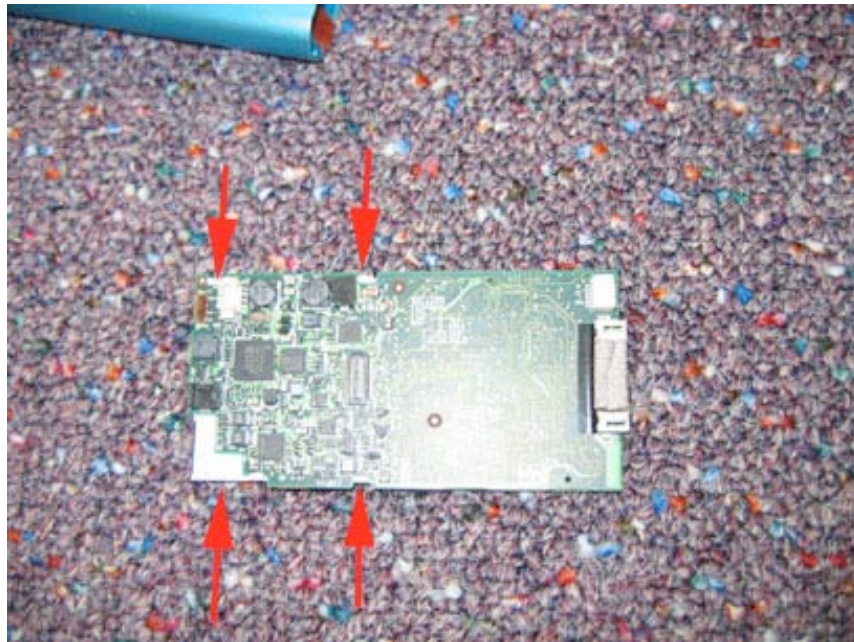
This is how the board should look when removed.



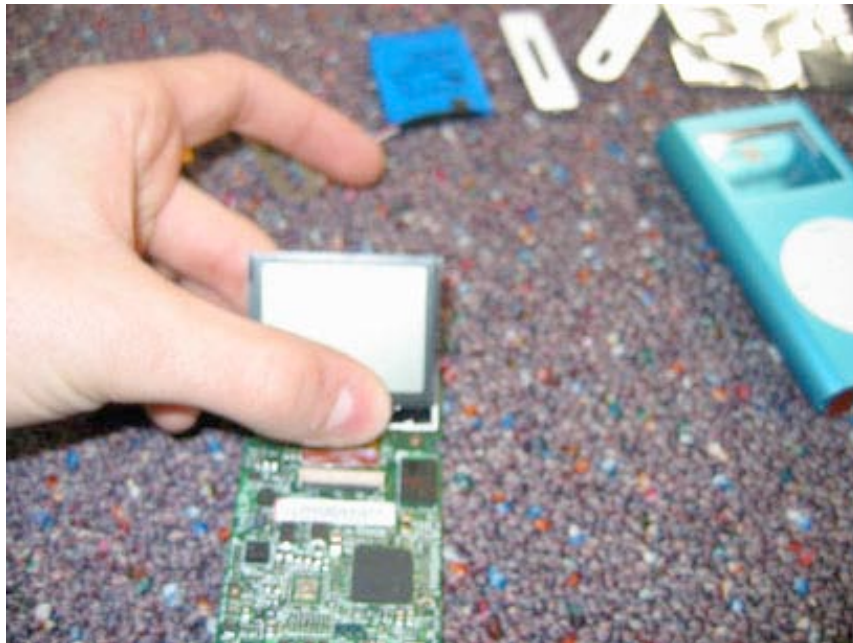
## LCD Screen / Display Removal

It is not necessary to remove the hard drive for this step, but you do need to first remove the battery.

On either side of where the battery was, you will notice 2 plastic white taps at the points indicated below. Gently push these clips away from the logic board to release them, and thus release the LCD. You should then be able to easily tilt the LCD up as shown in the 2<sup>nd</sup> picture.



The LCD is connected to the logic board with an orange ribbon cable. Gently grasp the bottom of the LCD and pull away from the logic board to free the connector. The LCD will now be free. To install a new LCD, line up the ribbon cable with the cable socket, and push the cable into the socket. The cable should fit well and not be loose.



## ClickWheel Removal

You do not need to remove the battery or hard drive before proceeding with this step. You must only remove the logic board from the shell. Place the logic board on a static free surface, and then work with the shell.

The clickwheel is mounted inside the shell. Looking on the underside of the unit, you will notice a black tab (pointed out by the arrow in the picture below) You must use your flat tool to pry this tab up while pulling the clickwheel out towards you. Once you get it started, you may want to use your flat tool from the other end of the iPod to help push it through.

Try not to grasp from the cable itself as you may end up damaging it



At Powerbookmedic.com, we strive to make our manuals as accurate as possible. If you would like to see something in this manual or would like to see something improved in this manual, please email us at: [sales@powerbookmedic.com](mailto:sales@powerbookmedic.com)

For all of your Powerbook & iBook parts and repair needs, visit us at:



Copyright © 2006 Powerbookmedic.com. All rights reserved.